





DANGER
DIESEL
COMBUSTIBLE
NO SMOKING





Lighting Cabinet (208V/110V)

Soft Start Cabinet 01

Soft Start Cabinet 02

Soft Start Cabinet 03

DANGER
HIGH
VOLTAGE

DANGER
LOCK OUT / TAG OUT
PROCEDURES MUST
BE FOLLOWED WHEN
PERFORMING MAINTENANCE
ON EQUIPMENT

PLUG INS →

Reference Cabinet

Incoming Cabinet (480V)

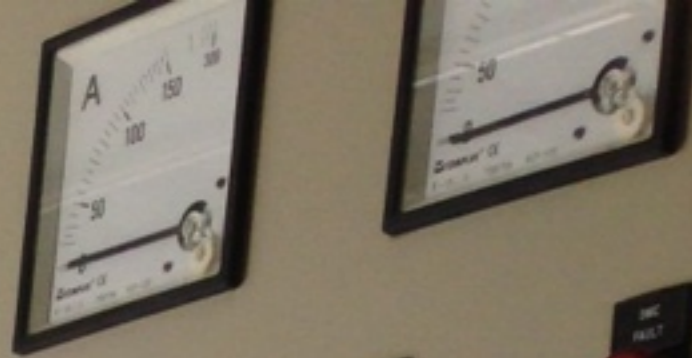


ANGER
HIGH
LTAGE

Feeder Cabinet (480V) 02 Feeder Cabinet (480V)

B

Panel with multiple rows of circuit breakers and control elements. Each breaker unit includes a black handle, a red indicator light, and a black control knob. Some units also feature small digital displays or indicator lights.

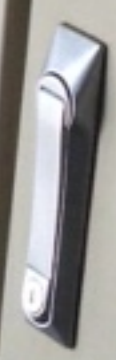


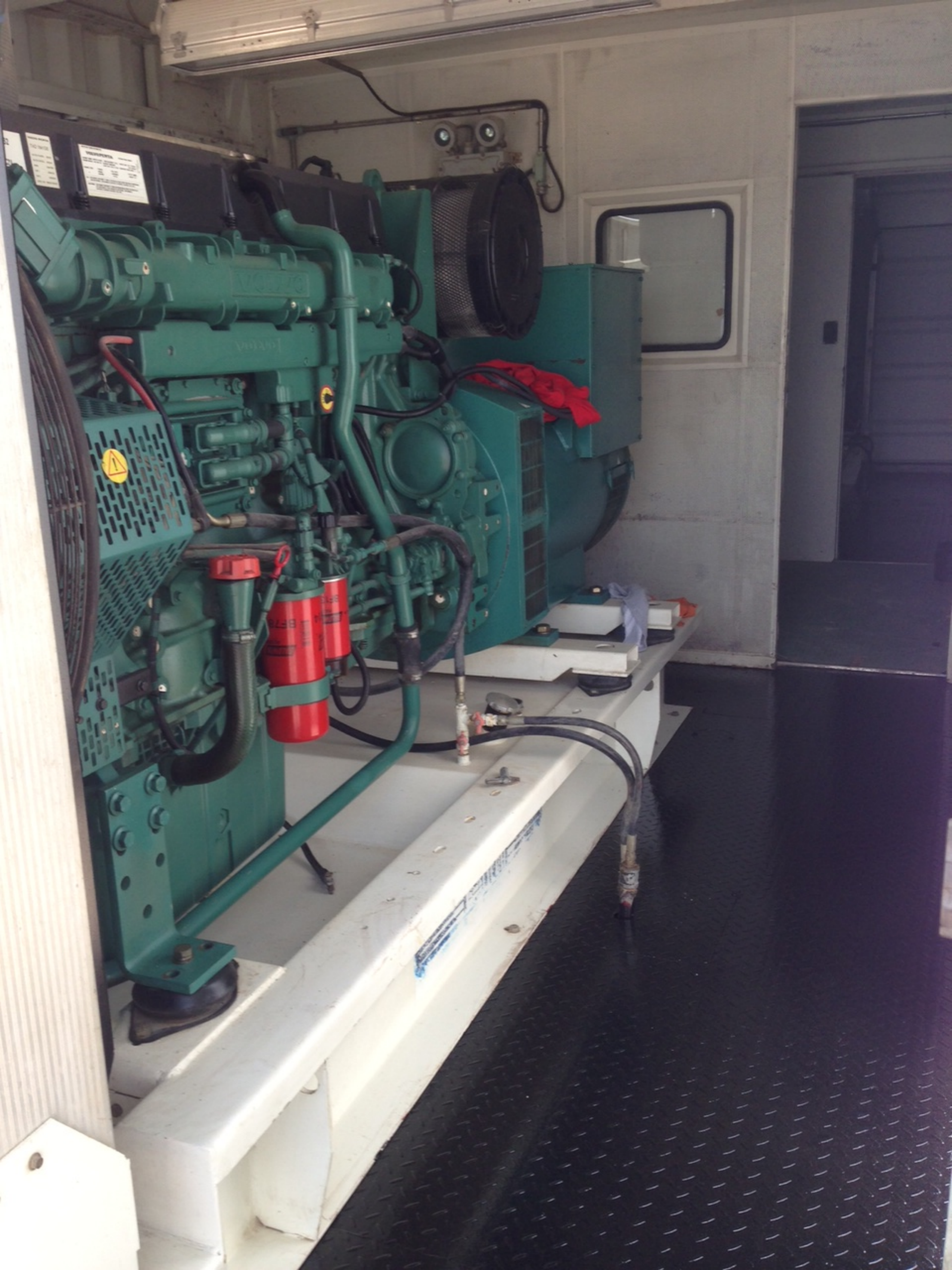
Control panel section with a white emergency stop button, a green start button, and a red stop button.

Control panel section with two red stop buttons and two green start buttons.

SELECTOR PUMP

AJD MIX PUMP AC









DANGER
DIESEL
COMBUSTIBLE
NO SMOKING